



# RIVER BIRCH HOMES

Quality  
Value  
Service

400 River Birch Drive ~ Hackleburg, AL 35564 ~ (205) 935-1997 ~ Fax (205) 935-3218

## STONEBIRCH SERIES

## SINGLE SECTION

### STANDARD FEATURES

#### CONSTRUCTION

12" Steel I Beam Chassis  
Full Length Outriggers  
2 x 4 Exterior Walls 16" o.c.  
2 x 6 Floor Joist 16" o.c.  
Drywall Construction  
Truss Type Rafters  
Zone One Insulation  
Vaulted Ceiling Throughout  
Sprayed Acoustic Ceilings  
Nova Deck Flooring

#### EXTERIOR

Mini Gutters Along Roof  
Starter Metal - Entire Home  
Mill Finished Windows  
Exterior Light at Each Exterior Door  
House Type Front Door with Storm

#### ELECTRICAL / PLUMBING

200 AMP Service  
Smoke Detectors  
100% Copper Wiring  
GFI Protected Receptacles in all Baths  
GFI Protected Receptacles at Kitchen Sink  
GFI Protected Exterior Receptacle  
Exhaust Fan in all Baths  
Electric Furnace - A/C Ready  
30 Gallon Water Heater  
ABS Drain Lines  
CPVC Water Lines

#### INTERIOR

Full Length Drapes in LR  
Mini Blinds Throughout  
Brass Door Knobs Throughout  
Wrapped Molding  
Wrapped Door Jambs  
30" Bedroom Doors

#### KITCHEN

Deep Stainless Steel Double Bowl Sink  
Decorative Molding on Kitchen Cabinets  
Center Shelves in all O/H Cabinets  
Base Shelf in all Cabinets  
White Lined Cabinets  
Metal Roller Guides  
Recessed Toe Kick  
Pantry in Kitchen (Most Models)  
Electric Range  
42" Recessed Range Hood  
Name Brand Appliances  
Raised Panel Cabinet Doors  
Recessed Hinges on Cabinet Doors

#### BATH

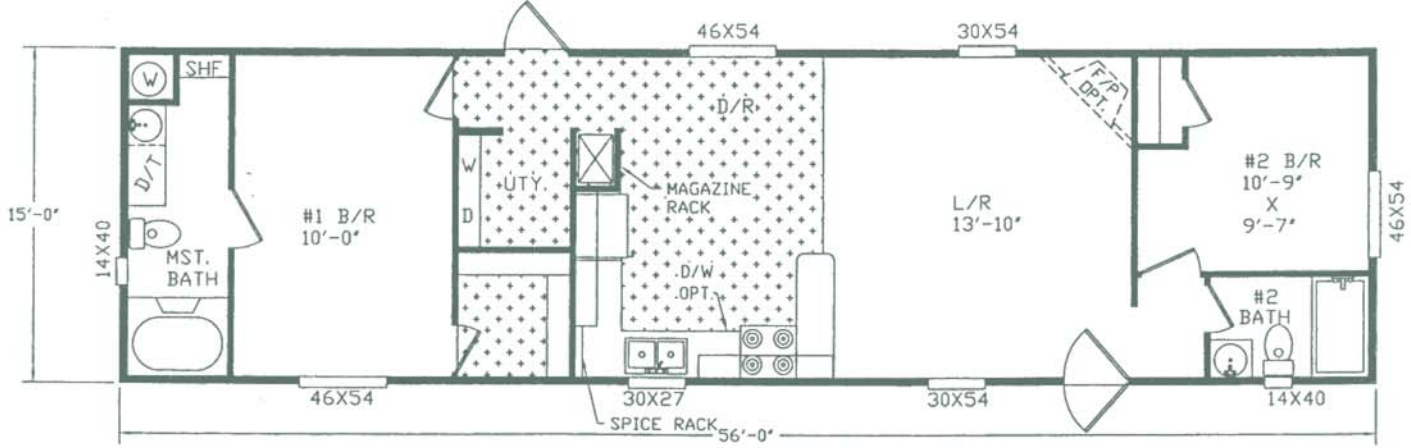
Glamour Bath (Most Models)  
Dressing Table in Master Bath  
Framed Mirror in all Baths (Most Models)

### POPULAR OPTIONS

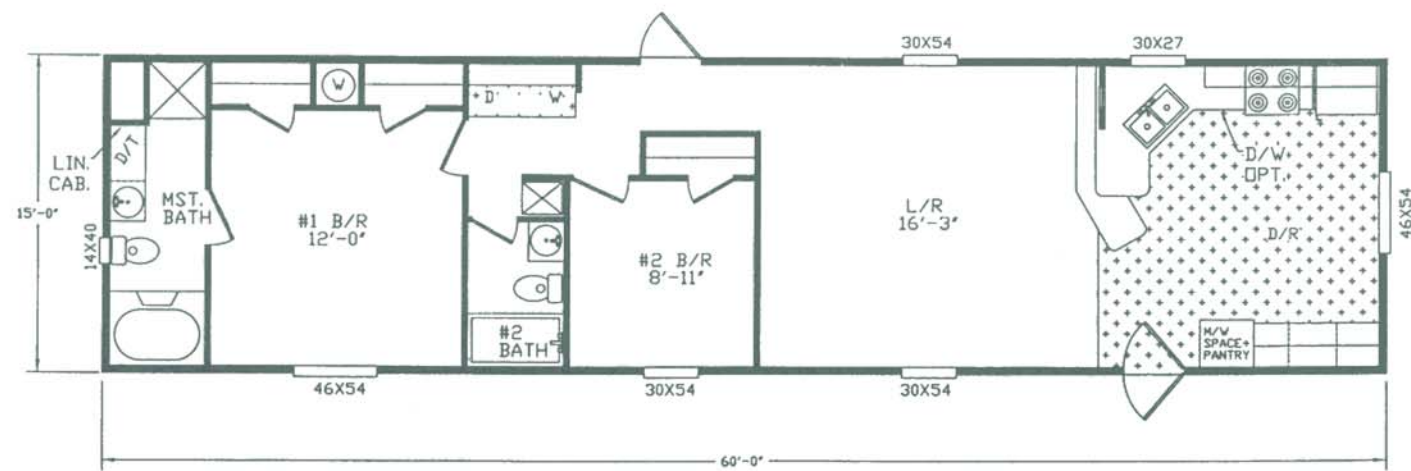
Thermal Zone II or III  
Ceiling Fan  
Wainscot in Living Room  
Music System

Upgrade Carpet  
Fireplace  
Dishwasher  
Storm Windows

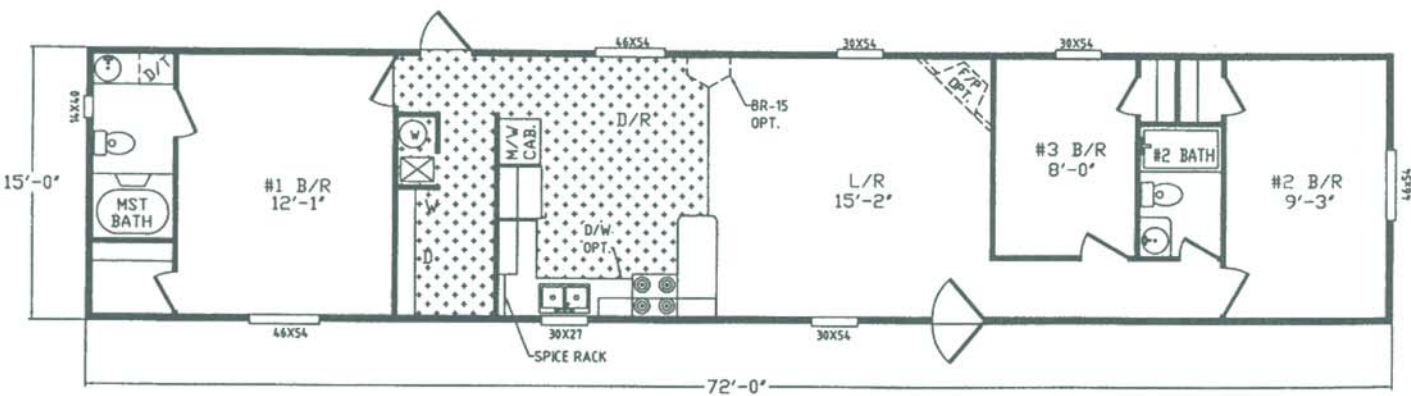
Steel Front Doors  
Cut-Off Valves  
Plywood Floors  
Backsplash in Kitchen



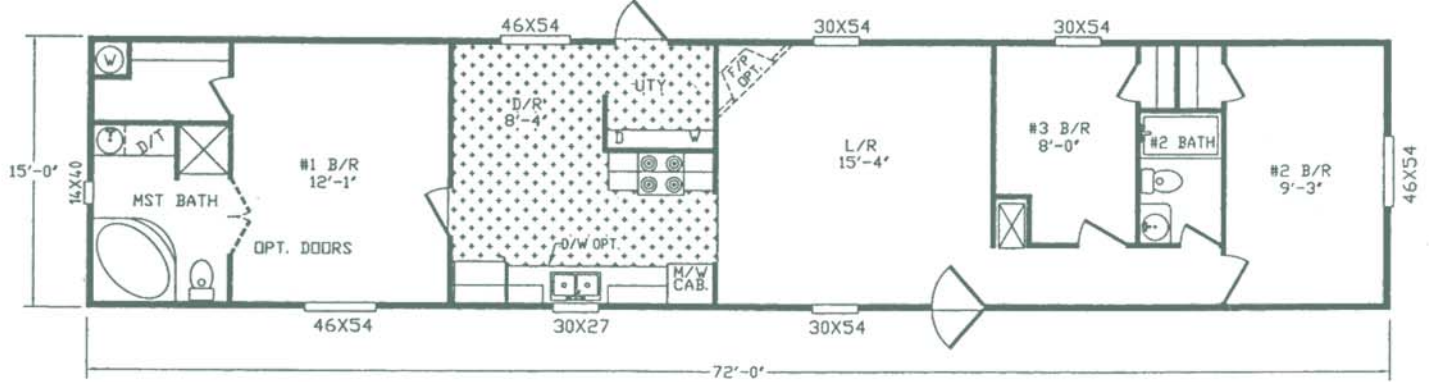
**MODEL 1010 • 60 x 16 • 2 Bedroom • 2 Bath • 840 Sq. Ft.**



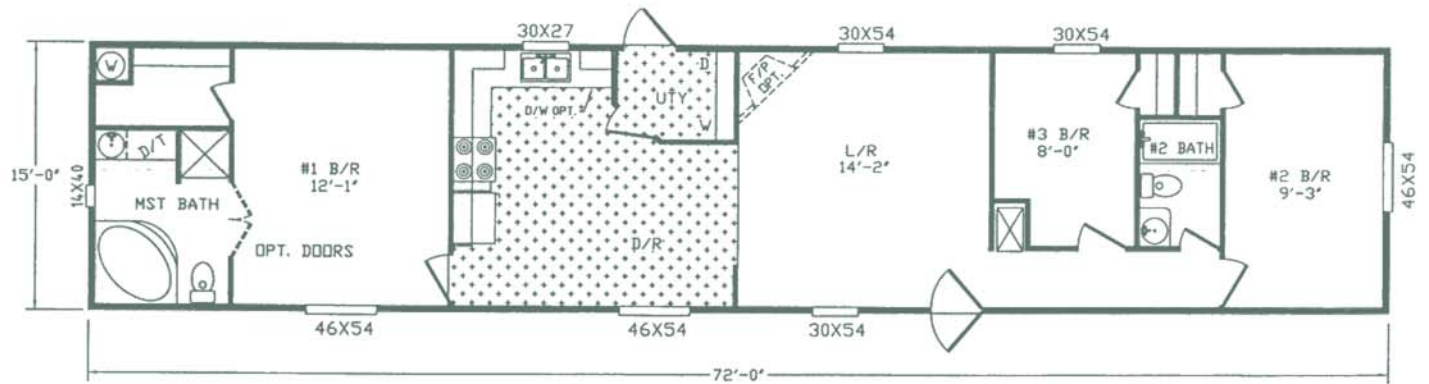
**MODEL 1005 • 64 x 16 • 2 Bedroom • 2 Bath • 900 Sq. Ft.**



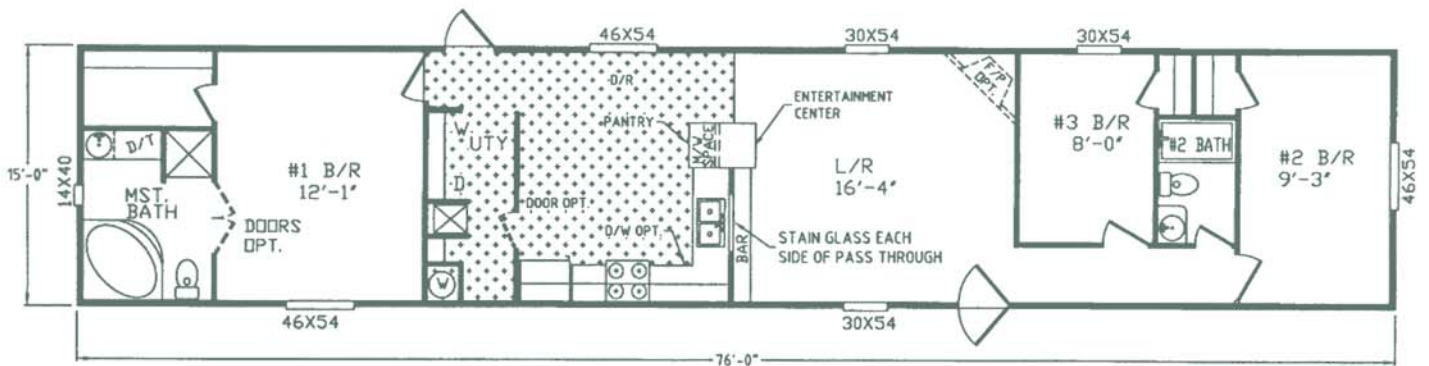
**MODEL 1009 • 76 x 16 • 3 Bedroom • 2 Bath • 1080 Sq. Ft.**



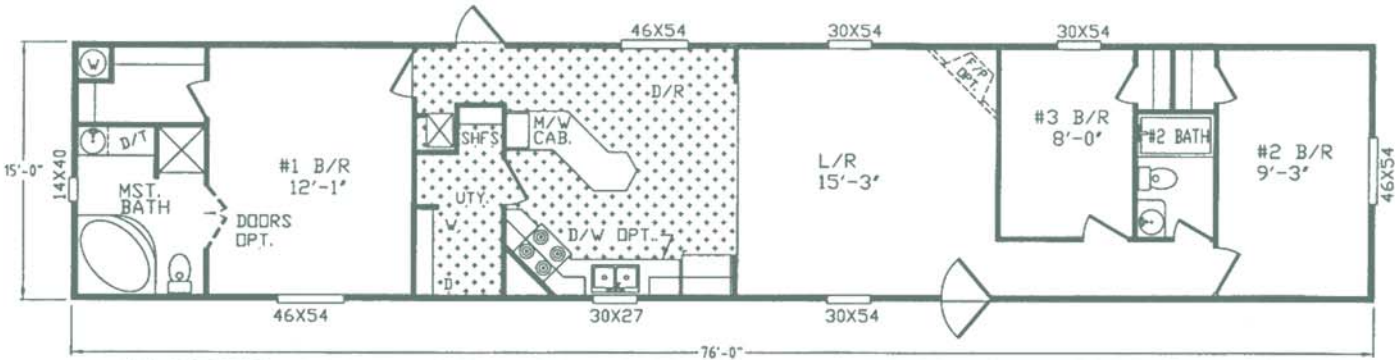
**MODEL 1013 • 76 x 16 • 3 Bedroom • 2 Bath • 1080 Sq. Ft.**



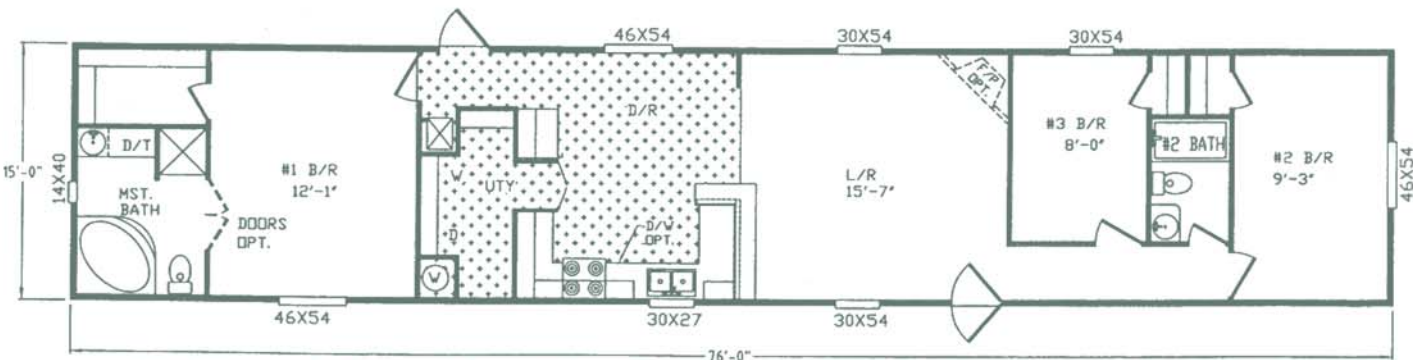
**MODEL 1014 • 76 x 16 • 3 Bedroom • 2 Bath • 1080 Sq. Ft.**



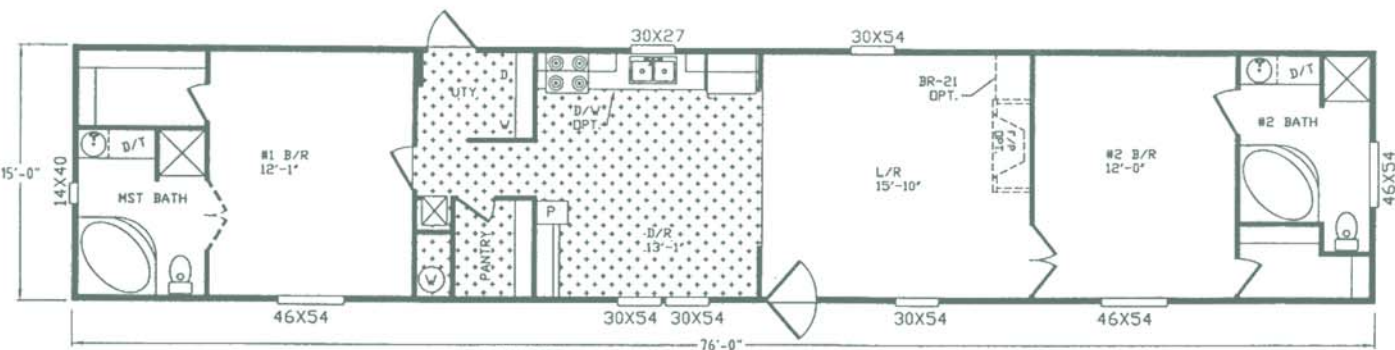
**MODEL 1001 • 80 x 16 • 3 Bedroom • 2 Bath • 1140 Sq. Ft.**



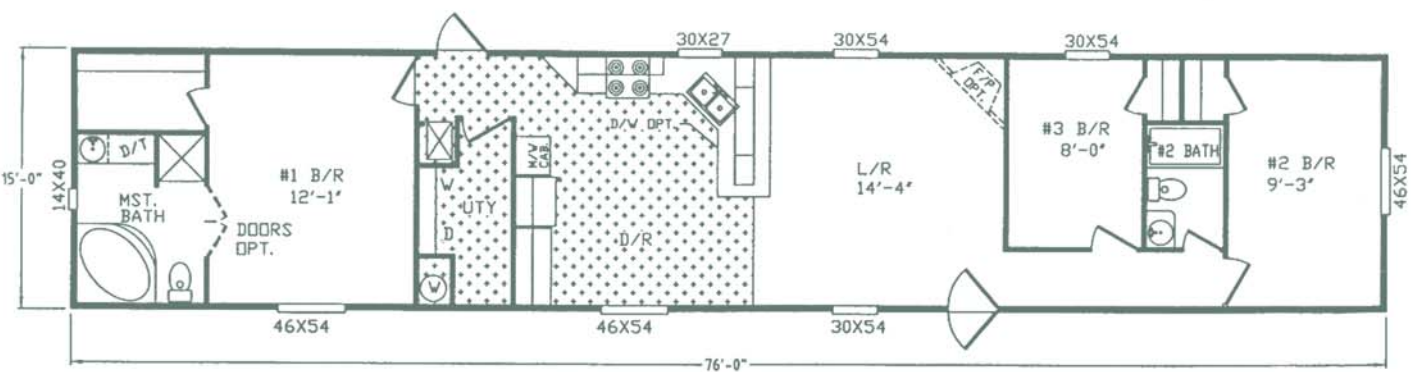
**MODEL 1007 • 80 x 16 • 3 Bedroom • 2 Bath • 1140 Sq. Ft.**



**MODEL 1015 • 80 x 16 • 3 Bedroom • 2 Bath • 1140 Sq. Ft.**



**MODEL 1016 • 80 x 16 • 3 Bedroom • 2 Bath • 1140 Sq. Ft.**



**MODEL 1017 • 80 x 16 • 3 Bedroom • 2 Bath • 1140 Sq. Ft.**

Renderings and diagrams are meant to be representative and keeping with RIVER BIRCH's policy of constant updating and improvement, may vary from the actual home. All dimensions are nominal. Ask your retailer for specifics.  
 PRICES AND SPECIFICATIONS SUBJECT TO CHANGE WITHOUT NOTICE OR OBLIGATION.